



The Historic Strand Theater of Lakewood, NJ

Quick Technical Information

Front of House

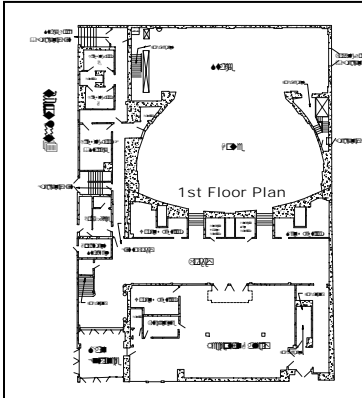
Raked seating: 1,042 seats (362 seats in orchestra, 104 in loge, 288 in mezzanine, 288 in tier).

To farthest seat, 121' (36.88m); to break, 48'.

Concessions handled by house, house receives 15% on all vendor sales.

Lobby and Reception Gallery about 2,000 square feet with bathrooms and caterer's kitchen.

All but basement, loge, mezzanine and tier are wheelchair accessible.



Stage

Proscenium: 20' 8" high x 42' 4" wide. Stage is 38' 6" deep.

From last line set to front edge of curved pit cover 37' 3"

From last line set to front of stage 28' 3"

From last line set to plaster line 24' 3"

From last line set to front curtain 23' 11"

Grid height: NO GRID AVAILABLE! High steel drop points available only at 6' and 18' from center on either side. High steel at 56' from stage.

Battens: Twenty-two 52' wide with out-trim of 54' and a capacity of 1,000 lb. per pipe. Repertory hang includes four electrics, three borders, four sets of legs, one main curtain, cyc, and two full-stage blacks, leaving ten free line sets.

Orchestra pit: Cement floor at 6' (1.83m) below stage floor, normally covered, can hold up to 25 people

Power

Two @ 120/208V, 3-phase 400 amp per leg, in lighting loft 20' (connected to house dimmer racks)

120/208V, 3-phase 100 amp per leg, stage left proscenium wall 7' from stage (cam locks)

Two @ 120/208V, 3-phase 200 amp per leg, stage right behind rail 20' from stage (cam locks)

Lighting

192 2.4k dimmers – 2 ETC SR48 (DMX512).

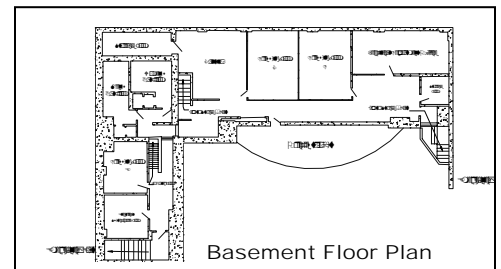
ETC Insight 108 (Version 2.05b w/512 capacity and single CGA monitor).

192 2kw circuits, (72 front of house) on stage may be supplemented with extra cable.

Houselights controlled separately.

Two Lycian Super Star 1.2 (1200HB) follow spots available with positions for two more follow spots available.

Rep light plot includes: Three-color par can down wash, four-color high side wash, two-color front wash and over 24 specials mounted at different locations. Four-color strip light to wash backdrops. Over 219 instruments utilized in rep plot. Gel and pattern holders available for all applicable instruments.



Sound

Theater has excellent acoustics.

Small sound system with 4 speakers, CD/tape player, 2 handheld, 1 wireless, and 3 floor microphones available.

Clear Com system available throughout theater.

Monitor/Paging system in all dressing rooms.

Old Steinway upright available.

Dressing Rooms

A & B: Four-person "star" in stage right hallway, stage level with shared bathroom.

C & D: Twelve-person each, under stage.

E: Eight-person, under A & B dressing rooms (under stage).

Cast/crew bathrooms in basement, stage right.

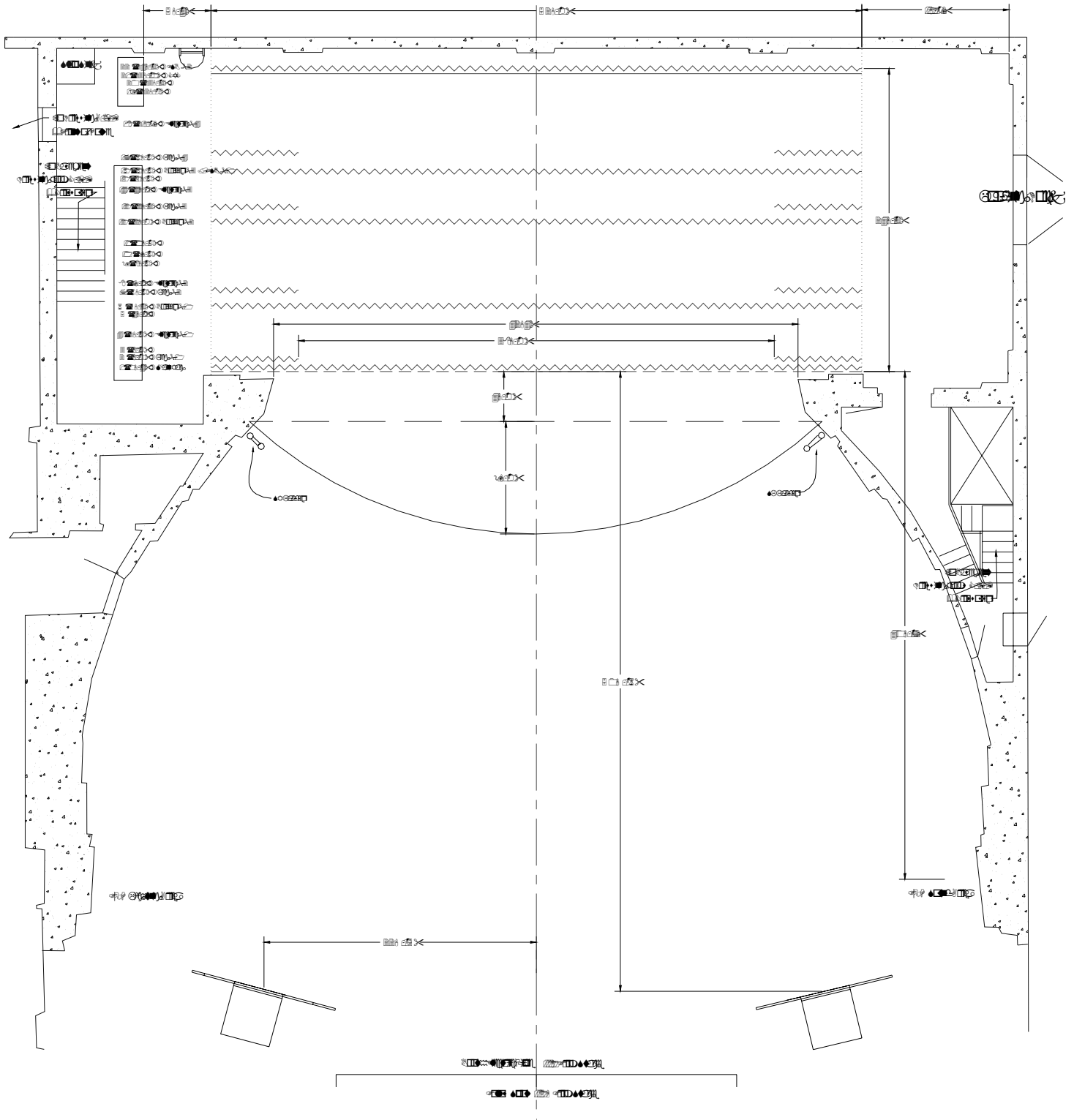
Loading Dock & Parking

Car parking available in lot across from theater. Limited bus and truck parking available with advanced notice.

Loading dock at stage level, 6 inches below normal truck level. No parking at loading dock.

Theater Layout

(with dimensions and line sets)
(Not to Scale)



For more information, to book the theater for rental, for rental rates or a copy of full Technical Packet call Chris Staton at 732-367-7789x206 or E-mail cricket@strandlakewood.com.