

Technical Information



The Historic Strand Center for the Arts of Lakewood

400 Clifton Avenue, Lakewood, NJ, 08701

<http://www.strand.org>

Tech Office: (732) 367-7789 x206 Fax: (732) 367-7819

Technical Director: Chris Everett

E-mail: c.everett@strand.org



Introductory Notes

We hope that this technical packet will give you all the information you need for your visit to the Strand Theater. In the introductory notes are a few things that you should be especially aware of as you plan your visit.

Loading Dock: Our loading area is not on our property so we MUST know ahead of time when anything larger than a van or small truck needs to be backed up to the loading dock. It also may be difficult for a large semi truck to be backed up to the dock unless you have a very experienced driver. A fifty-two footer (52') with an extended cab will not fit at all.

Rigging and Pit: Please take note that the theater DOES NOT have a grid! All above-stage rigging MUST be either on a batten or rigged from a very few steel beams. Currently none of our crew are able to rig off the steel, so we must be made aware of any high steel rigging needs at least two months in advance.

The pit normally has a cover on it. Cover removal is time-consuming, so again we must ask for a two-month warning. Access from the stage into the audience is normally from offstage only. Removable steps can be set up to provide access from the stage into the house.

Lighting: Included in this packet is our repertory plot. Please keep it in mind as you are designing your plot. Ours is a flexible plot and should work well for most shows. Refocusing and rechanneling are not problems; however, rehangng the plot is both time-consuming and expensive, and should be avoided at all costs! Rental groups will be charged for any changes to the plot. We will not relamp instruments, other than those that blow out, and will relamp Par cans on a limited basis only! Included is an instrument schedule. The front-of-house hanging positions are a left and right perch that are above the break. Also left and right are two lighting ladders at about 2' beyond the front of the stage at the sides of the proscenium. Last but not least, there is a pipe on the front of the booths at the back of the house (more than 100' from stage). THERE ARE NO OTHER FRONT-OF-HOUSE POSITIONS! There is no way to hang truss or anything else over the audience or front of the stage.

Smoke, Open Flames, and Pyrotechnics: Use of open flames requires two firemen to be on duty within the building. Pyrotechnics must have a New Jersey Licensed pyrotechnician to operate.

No restriction on fog or haze if used within reason, Technical Director has authority to discontinue use.

Backstage: The basement area is not accessible for road cases except by carrying them down a set of stairs. Backstage capacity is limited to 150 people.

Crew:

We are a nonunion facility. The presenter's management, the artists' representative, and the Strand's Technical Director shall determine call size. Our trained employees, who are familiar with our equipment and facility, staff all events. One staff member must be present whenever the venue is in use regardless of any other personnel required. Minimum staff size is at the discretion of management and is determined on an event-to-event basis. All Strand equipment must be operated by or under supervision of Strand staff.

Load-In Area

Dimensions: Loading dock door is 6' 10 ½" (6.875m) by 6' 10 ½" (6.875m). This is the largest opening in the building. Our loading area is not on our property so we MUST know ahead of time when anything larger than a van or small truck needs to be backed up to the loading dock. It also may be difficult for a large semi truck to be backed up to the dock unless you have a very experienced driver. A fifty-two footer (52') with an extended cab will not fit at all. Loading dock is close to truck height. Vehicles can only be at dock to load/unload. There are two free parking lots available on Fourth Street and Fifth Street. On-street parking is also available.

Truck and bus parking **ONLY** with advance notification.

Carpentry

Seating:

Raked seating: 1,030 seats (352 seats in orchestra, 104 in loge,
288 in mezzanine, 286 in tier).

Six (6) spots for wheelchairs house left in orchestra

To farthest seat, 121' (36.88m); to break, 48' (14.63m)

Stage Dimensions:

Proscenium: 20' 8" high x 42' 4" wide (6.29m x 12.9m). Stage is 38' 6" (11.73m) deep.

From last line set to front edge of pit cover 37' 3" (11.35m)

From last line set to front of stage 28' 3" (8.6m)

From last line set to plaster line 24' 3" (7.39m)

From last line set to front curtain 23' 11" (7.29m)

Wing space, stage left: 11' x 25' (3.35m x 7.62m) includes storage space for ladders.

Wing space stage right: 5' x 25' (1.52m x 7.62m) includes room for rail operators; does not include room behind rail

Grid height: NO GRID AVAILABLE!

Orchestra pit: Cement floor at 6' (1.83m) below stage floor, normally covered, can hold up to 25 people

Stage height: 3' 4" (3.33m) from house floor

Stage floor:

Masonite-covered, softwood on wood joists, black surface

House Draperies:

House curtain: Maroon velour, guillotine on line set #1 at 0' 4" (.1m) from plaster line, controlled manually from rail stage right

Legs: Five sets @ 10' x 25' (3.04m x 7.26m), black velour, no fullness

Borders: Five @ 10' x 50' (3.04m x 15.24m), black velour, no fullness

Full stage: Two panels @ 25' x 25' (7.62m x 7.62m), black velour, with fullness

Single panel @ 25' x 50' (7.62m x 15.24m), black velour, no fullness

Scrims: One -Black sharks tooth scrim @ 30' x 50' (9.14m x 15.24m)

Cyclorama: One – Leno filled seamless white Cyc @ 30' x 50' (9.14m x 15.24m)

Line Set Data:

Line set plot: See Attachment

Working height of battens: High trim is 54' (16.45m) and low trim is 4' (1.21m)

Battens: Twenty-four 52' (15.84m) 1½" schedule 40 pipe

Type: All lines are single purchase; locks are at stage floor level

Arbor capacity: Maximum load 1,000 lb. per pipe (450kg)

Available weight: Approx. 10,000 lb. (4,500kg) various sizes and weights

Loading gallery: Stage right at 50' (15.24m) above stage floor

Other heights: Roof at 63' (19.2m), support steel at 58' (17.68m)

Drop Points (Overhead Steel): Left from Center Line at 6' 8" and 19' 2"

Right from Center Line at 5' 5" and 18' 0"

Support Areas:

Crossover: Onstage if the last two line sets are not in use, or under the stage

Access: From stairs stage left and right, and door from hallway stage right

Shop Area:

None available

Notes:

Please call before considering hanging from steel.

Policies:

Fire curtain: The free movement of the fire curtain to the stage floor must be maintained at all times.

Scenery and rigging: The Strand reserves the right to inspect all scenery and rigging prior to use. The Strand also reserves the right to make repairs as needed.

Spray painting: No spray painting is allowed onstage or in wardrobe areas.

Flameproofing: All scenery and properties must be flameproofed before they may be used on stage. Productions must show certification of flameproofing upon request and are subject to inspection by the state fire marshal.

Lighting

Power:

Two @ 120/208V, 3-phase 400 amp per leg, in lighting loft 20' (6.09m) (connected to house dimmer rack)

120/208V, 3-phase 100 amp per leg, stage left proscenium wall 7' (2.13m) from stage (cam locks)

Two @ 120/208V, 3-phase 200 amp per leg, stage right behind rail 20' (6.09m) from stage (cam locks)

(Currently, voltage is running at about 121V per leg.)

Dimmers:

192 2.4k dimmers – 2 ETC Sensor Install Rack (DMX512)

No Non-dims available thru dimmer rack (must supply own non-dim control)

Non-dims can be powered and controlled from circuit box stage right

12 2.4k dimmers – 2 - 6 circuit Leprecon ULD-360 (Stage Pin) (15 amp max between 3 dimmers)

Dimmer racks located in loft 10' off stage floor stage right

Three DMX control lines from booth to stage: two by dimmer and one at stage level

Two DMX control lines from mid theater (center) break

Work lights and house lights cannot be controlled by DMX signal; they are controlled by panel onstage and in light booth.

Control Board:

Avolites Titan Mobile W/ Fader Wing.

Remote focus unit available

Limited to 1024 channels

House Lights and Work Lights:

Control at stage right or lighting booth

Circuits (Dimmer per circuit) :

192 @ 2.4kW circuits (all hard wired to dimmer racks)

72 from front of house (12 repeated next to rack)

96 from onstage 12-channel multis (may be supplemented with extra cable runs)

24 next to rack with runs to side boom positions.

Equipment Inventory:

Instruments:

23	Altman 360Q 6x22
40	Altman 360Q 6x16
38	Altman 360Q 6x12
38	Altman 360Q 6x9

10 Source 4 jr. Zooms 25-50
44 Par 64

Follow spots: Two Lycian Super Star 1.2 (1200HB)

Hardware:

6 R40 striplights: 4-circuit, 16-cell
100 10" frames
200 7" frames
20 Source 4 frames
30 Pattern holders (B-Size)
10 Pattern holders (M-Size – for Source 4 jr.)
8 Boom bases and 12' (3.65m) pipes
80 7" doughnuts
30 7" Tube extenders
10 Source 4 tube extenders
33 Side arms

Cable: Approx. 4,000' of cable in lengths of 5', 10', 15', 25', 40', 50', and 100': 12/2SO 2-pin and ground stage plug, no twist lock adapters available
Approx. 40 two-fers, various Edison-to-stage-pin adapters are available
200' (30.48m) DMX cable

Film, video, and projection equipment: Epson EX3220 Projector. There is no projection screen for the main auditorium, instead a white Cyc is used.

Gallery has a screen.

Sound

Power:

Two @ 120/208V, 3-phase 400 amp per leg, in lighting loft 20' (connected to house dimmer rack)
120/208V, 3-phase 200 amp per leg, stage left proscenium wall 7' from stage (cam locks)
Two @ 120/208V, 3-phase 200 amp per leg, stage right behind rail 20' from stage (cam locks)

Wiring:

One Cat5e line from FOH position to stage, two 12 and one 8 channel sub snakes

Control Location:

House Center 40' from stage

Monitor System:

Booths, technical office, all dressing rooms, and hallways; fed by microphones on either side of stage.

Production Communications:

Limited Clear Com
Wireless Radios

Equipment Inventory:

Mixing consoles: Two Behringer X32

Fixed speaker: QSC KLA Stacked line array (Three 18" Subs and Three 12"/2.75" Tops per side.)

Portable speakers (Monitors): Three Mackie SRM 450, Two QSC K12, Four Turbosound Sienna

Notes:

Please contact Technical Director for microphone/ XLR cable stock.

Rental speakers must come with their own amps.

Acoustics of the theater are considered excellent.

Orchestra Pit:

Capacity: 25 musicians
See Carpentry for more info
No storage room in pit area
Pit normally covered
padded chairs

Music:

Stands: (50) Fifty
Stand lights: (25) Twenty Five
Conductor podiums: One 8" stand

Orchestra Shell:

None available

Platforms:

12 wood 4x8 platforms, 1', 2', and 4' legs

Dance Floor:

5 panels 50' x 4' Rosco Black Marley Dance Floor (covers entire stage)

Wardrobe

Dressing Rooms:

A & B: Four-person "star" in stage right hallway, stage level with shared bathrooms
C & D: Twelve-person each, under stage
E: Eight-person, under A & B dressing rooms (under stage)
Cast/crew bathrooms in basement, stage right

Wardrobe Area: None available, may use dressing room or Cantina

Irons: One

Ironing boards: One

Steamers: None

Washer/dryer: Standard size washer and dryer available in Cantina

Racks/hangers: Six heavy duty racks available (supply of hangers)

Quick-Change Booths: In house pipe and drape

Other Spaces

Gallery:

Sound/Video/Carpentry:

Contact Technical Director for Gallery specs.

Kitchen:

Refrigerator, dishwasher, microwave and warming oven available.

Line Set Schedule

Line #	From P.L.	Trim	Weight	Use
0	0' - 0"	---	---	Fire Curtain / Hard Border
1	1' - 1"			Main Rag (Guillotine Type)
2	1' - 6"			
3	2' - 1"			<i>Leg #1</i>
4	2' - 6"			<i>Electric #1</i>
5	4' - 1"			
6	5' - 1"			
7	6' - 1"			<i>Legs #2</i>
8	7' - 1"			<i>Electric #2</i>
9	8' - 7"			
10	9' - 7"			
11	10' - 7"			<i>FSB #1</i>
12	12' - 1"			<i>Leg #3</i>
13	13' - 1"			
14	14' - 1"			<i>Electric #3</i>
15	15' - 7"			
16	16' - 7"			
17	17' - 1"			<i>Legs #4</i>
18	19' - 0"			<i>Electric #4</i>
Stage Door				
19	21' - 9"			
20	22' - 3"			
21	22' - 9"			
22	23' - 3"			
23	23' - 9"			<i>CYC</i>
24	24' - 3"			<i>FSB #2</i>

Items in Italics are our Rep. Plot and may be moved or removed. Electrics cannot be moved.

Open spaces denote future line set positions. We do not have a grid.

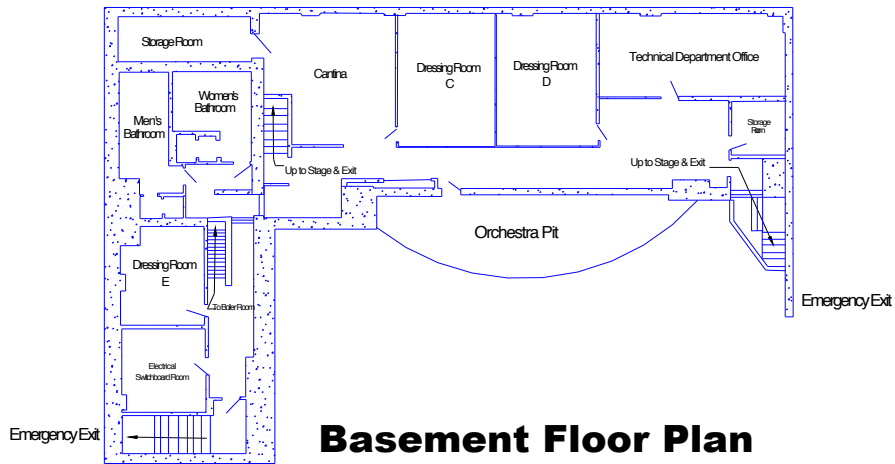
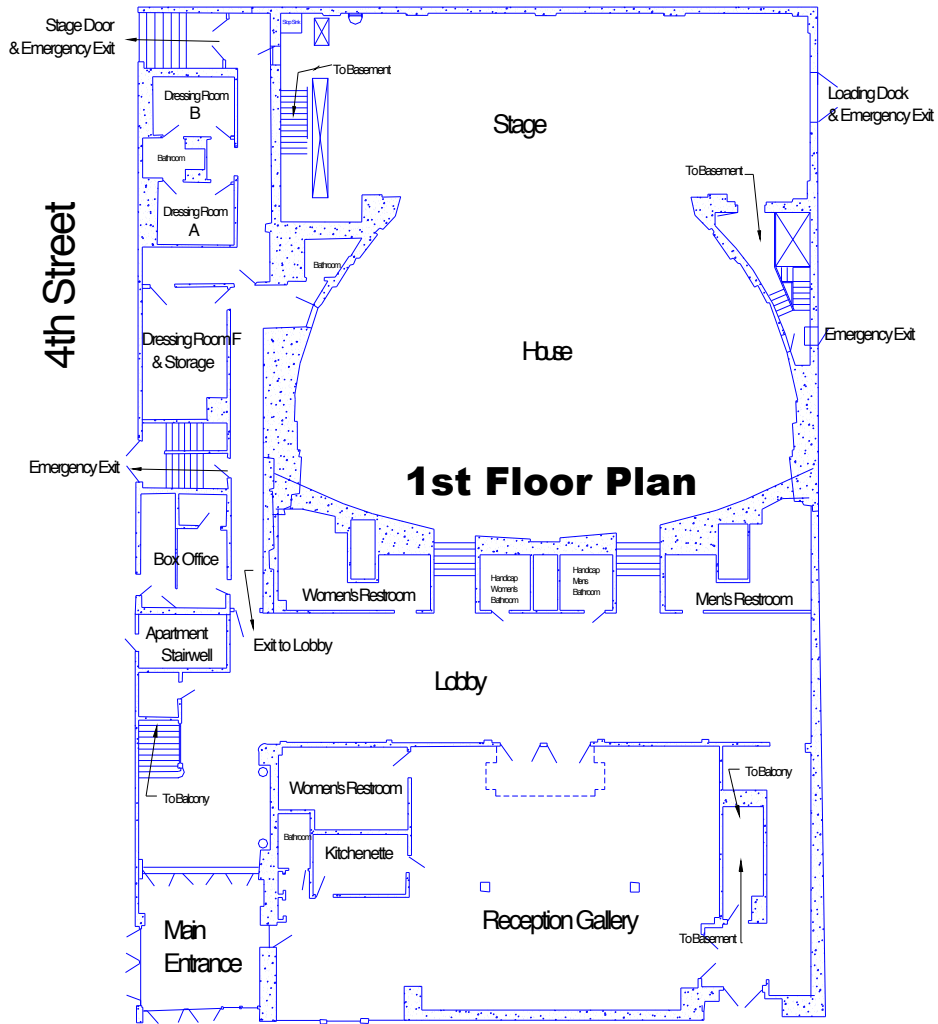
Empty Pipe: Aprox. 175lbs | Full Stage Black: 150lbs.. | Leg Set: 70lbs. | Border: 70lbs |

All weight is marked above pipe weight unless noted.

Out height 54' - 2" | In height 3' | Max Arbor Capacity 1000lb. | Clearance Under Steel 57' 8"

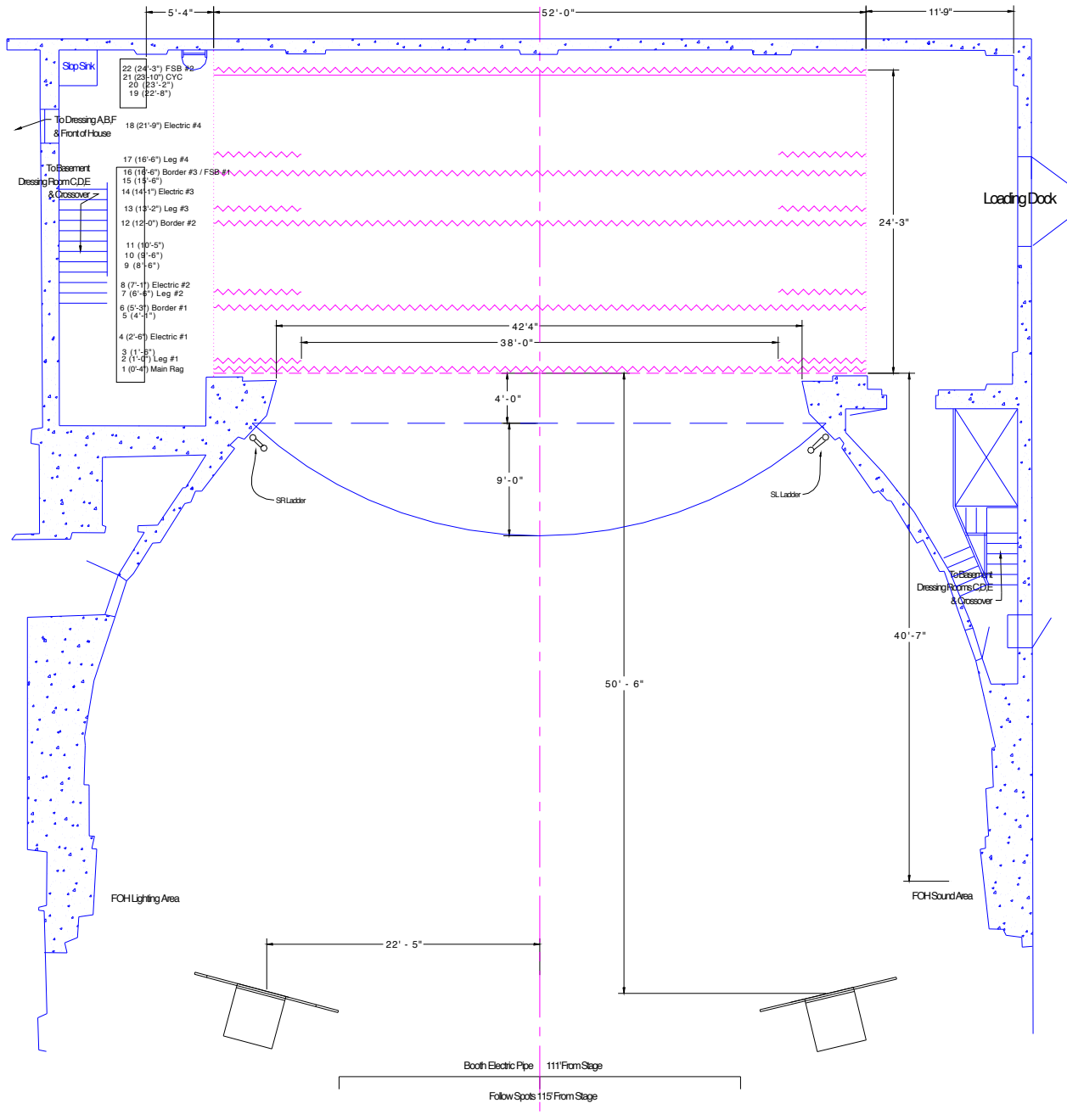
Building Floor Plans

Not to Scale



Stage Diagram (Dimensioned)

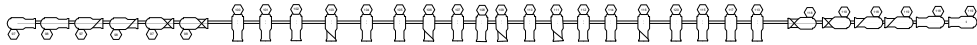
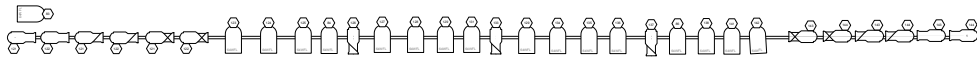
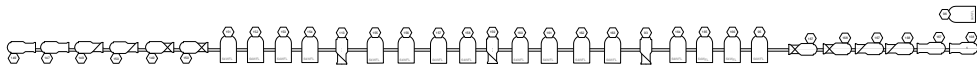
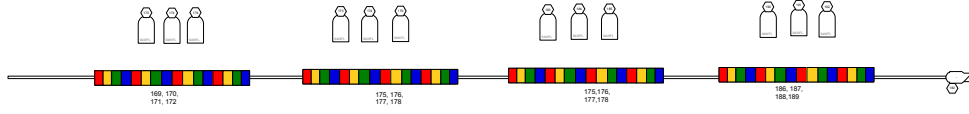
Not to Scale



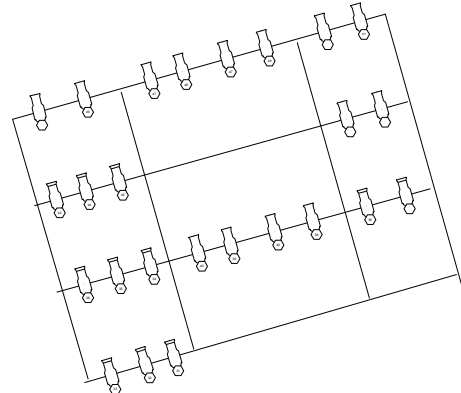
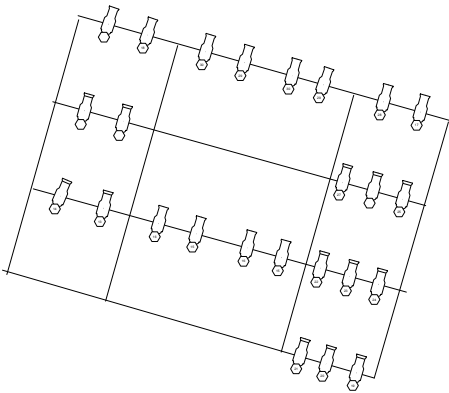
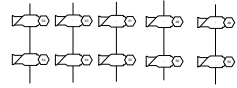
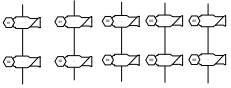
Ignore FOH positions for sound and lights

Light Plot

VECTORWORKS EDUCATIONAL VERSION



Instruments	
	All 380Q Ex9
	All 380Q Ex12
	All 380Q Ex16
	PAR 64 WFL
	All 380Q Ex22



VECTORWORKS EDUCATIONAL VERSION